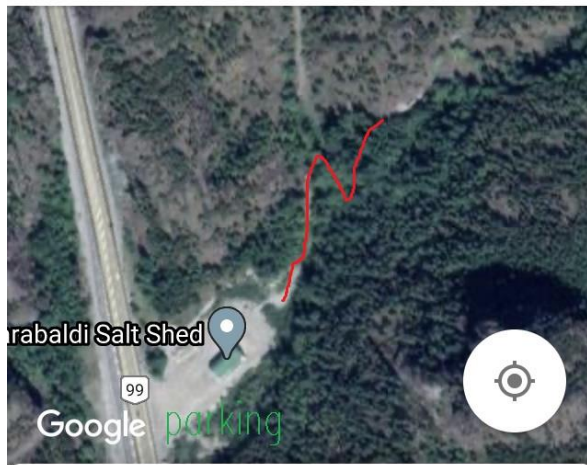


The Hideout

20 min North of Squamish on hwy 99, next right turn past Conroy FSR (chek)

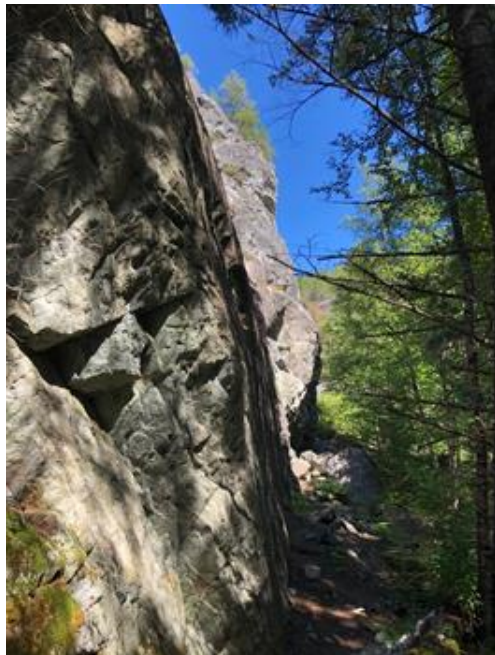
DO NOT BLOCK OR PARK NEAR SALT SHED

Approach; Park out by hwy walk towards salt shed ,Follow a little dirt road up behind salt shed keep walking , you will pass a yellow gate (severely over grown), follow through slightly overgrown trail until it turns right onto another trail that will head back into the direction you just came, before little creek turn left, trail heads up hill. **5 min from car**



PLEASE RESPECT ALL CLOSED PROJECTS

Cliff first Approached



Located in a beautiful forest setting next to a creek, home to many animals, predominantly Bears, Cougars, elk and bats all have been seen or heard please give these animals space if seen. Don't leave any attractants at base and please pack out what you bring in.

The Hideout

Routes listed climbers left to right



1). 5.11a- - Queynte corner, short, blocky,(At time of development block would not come off this may change over the years). (FA Tess, Jay R)

2). 5.11a/b- Thin Skin -. The thin seam, fun (FA Jay R, Tess, Krissy)

3). 5.11b Cigaro (S .O.A.D) – A thin start and high-ish first bolt, Crux off the ground moves into easier ground (easier if you are tall) (FA Tess, Jay)

4). 5.11a/b- Tick Attack - Thin starting moves gains easier ground up above (FA Jay, Tess)

5). 5.10c – Curmudgeon – Cruxy first moves again gains easier ground (FA Tess, Krissy,)

6). 5.10b- Over the Top - One move gives the grade, after crux 5.9 climbing, route keeps going up over the top out of sight (FA Tess, Krissy)

7). 5.9 – Peyronies Path- Start off triangular block move around through delicate crux, fun. (FA Krissy, Tess)

8). 5.10d- Talking Bush.- Up techy face, moving right about mid-way to join the arête lowers the grade , the fun continues to the top (FA Krissy, Tess)

(The next two routes are shorter and side by side)



9). 5.11a/b- Endometrium – Thin crimps bring you up to a small roof, (FA Tess, Jay R)

10). 5.10c/d- Fast Eddie- Crack with some fragile rock leads up to small roof (FA Tess, Jay R)

The Hideout

Follow trail around boulder to base of big bulge and arête, routes here start at #11



11). 5.13a- Opinions of Minions- Up the steep arête, what was once a 12+ became a 13 when a hold broke and an aid start was required to the first bolt until Eric came and sent it without. (FA Eric Hughes, PREP Jay R)

12). CLOSED project (Tyrone, red flagging)

13) 5.11c/d – Dream with The fishes – steep powerful start continues through the bulge then move onto thin technical ground, Quality (FA Jay, Tess)

14) 5.10c/d - Vespidae Staredown – Start off boulder,(bolt low down for the belayer), route moves from bulges to a steeper fun finish, Quality (FA Tess, Jay)

Move around corner to large long over hanging face



15.) 5.11d - Son of the Morning – steep start continues onto the top, some holds like to face the wrong way, fun route requires some thought (FA Jay R, Tess)

16) 5.13a- -Trust Fund Dirtbag – (FA. Nic Beaulieu, Prep Jay Robinson)

The Hideout

ALL ROUTES CLIMBERS RIGHT OF #16 ARE CLOSED PROJECTS(over hanging wall), IF YOU HAVE ANY QUESTIONS REGARDING THESE CLOSED PROJECTS PLEASE CONTACT DEVELOPERS ASSOCIATED WITH THAT ROUTE.



CLOSED Project (Tyrone B, red flagging,)

CLOSED Project (Toby F-K, draws)

CLOSED Project (Tyrone B, red flagging) large steep wall

CLOSED Project (TYrone B,red flagging)large steep wall

Tess and Krissy spent the better part of several rainy days out clearing the heavily overgrown base and trail. First discovered by an unknown climber who put up some ropes but never cleaned anything, this unknown person put in some bolts but they were poorly done and very difficult to remove, only one remains at an anchor but two new bolt hangers were added. Then Tyrone B. at some point years back put up some ropes and bolted 4 routes they are currently closed projects. Tess and Jay bushwhacked in to check out the cliff a few years ago but in the end it was Tess and Krissy that spearheaded the crags development, they started with the base clearing, trail maintenance and scrubbing with the help of Jay R.

Strongly advise the use of helmets all rock is subject to change and risk of fall hazards.

THANKS TO THE SEA TO SKY ROUTE DEVELOPMENT FUND FOR THE HARDWARE REQUIRED FOR THIS CLIFF. THANK YOU TO EVERYONE WHO HAS SUPPORTED US OVER THE YEARS. WE REALLY APPRECIATE YOU ALL.